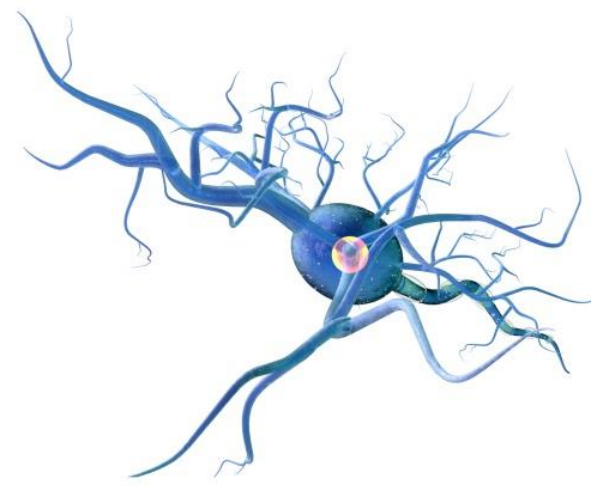


Meeting Overview

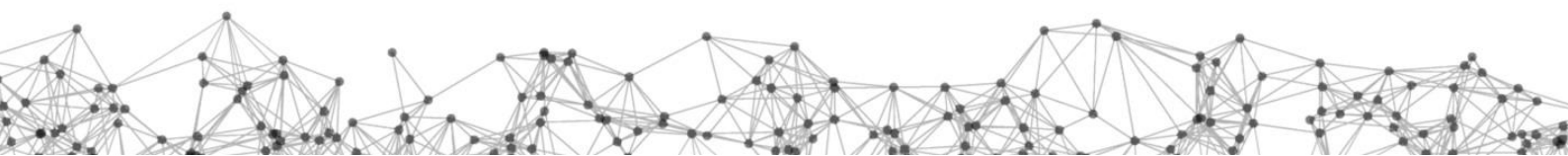
Attendees: Ian Edwards WLEP
 Nigel Hudson Worcestershire County Council
 Mike Ashton Chamber of Commerce
 Tim Maxfield Worcester University
 Jane Holmes Birmingham Science City / CTB
 Alan White Malvern Hills Science Park / CTB
 Keith Mowbray QinetiQ
 Robin Dickson QinetiQ
 Jessica Antley Worcestershire County Council

Apologies: Dionne Oliver QinetiQ



Introductions were made and board members were asked to expand on the 'why' and 'what for' with regards to their attendance. The Winn team will continue to refer to these and ensure they are considered and met when building the delivery plan and ultimately day to day actions.

Tim Maxfield Worcester Uni	<ul style="list-style-type: none"> ✓ Growth of Client Base – innovation. ✓ Curriculum to fit need – local and county wide ✓ Business School – Tools/Audience 	Nigel Hudson WCC	<ul style="list-style-type: none"> ✓ Innovation infrastructure ✓ Great scalable things going on already in Innovation space ✓ 'Enable' ✓ Internal Opportunities
Ian Edwards WLEP	<ul style="list-style-type: none"> ✓ Innovation Culture of County 'what else can be achieved' – community. 	Jane Holmes B'ham Science City CTB (POC)	<ul style="list-style-type: none"> ✓ Innovation through Super SEP – Intelligent Systems ✓ Mid. Science Park – alliance / voice ✓ 'Connect'
Keith Mowbray QinetiQ	<ul style="list-style-type: none"> ✓ Worcestershire to grow in strength – capabilities. ✓ Utilise / promote rich talent 	Alan White MHSP CTB	<ul style="list-style-type: none"> ✓ Innovation projects ✓ Place on the map ✓ MHSP – IP / Soft infrastructure creation for innovating. ✓ 'Tease out' what's already in existence. ✓ Cross borders – bring home
Mike Ashton CofC	<ul style="list-style-type: none"> ✓ Business Engagement – support community ✓ COC / WBC / UKTI ✓ Partnerships 		



Action Log

1	Chair and Vice Chair	Paul Walker is proposed as chair and meeting being planned with NH / IE to discuss with him – JA requested attendance.	<ul style="list-style-type: none"> ➤ Meeting to take place with Paul with aim to take up Chair at next WInn board meeting. ➤ JA to attend meeting if possible to give overview of presentation. 	NH/IE JA
		It was also proposed a Vice Chair should be appointed.	<ul style="list-style-type: none"> ➤ WInn team to propose prior to next meeting for agreement 	JA/RD/DO
2	Launch of WInn	Board requested if launch could be June as opposed to July that was proposed	<ul style="list-style-type: none"> ➤ WInn team to produce activity plan and timings to establish when date will be and confirm. 	JA/RD/DO
3	KPIS	Long term and short term KPIS are to be reviewed as noted that terminology and actuals should be more in keeping with what project is about (e.g. Queens Awards)	<ul style="list-style-type: none"> ➤ WInn team to take away and recommend suitable KPIS 	JA/RD/DO
4	Achievements	It was noted a lot has already been achieved in time for this meeting, including creation of board and group actions to date. The team should ensure achievements are captured and built into plan.	<ul style="list-style-type: none"> ➤ WInn team to keep full log of achievements 	JA/RD/DO
5	WInn - name	WInn was proposed as the name moving forward and brand to be established – request was put to Alan to complete an IP/TM check on the name to ensure no conflicts/	<ul style="list-style-type: none"> ➤ Alan to check WInn is possible as name going forward. 	AW
6	W.Uni Entrepreneur Bootcamp	Tim confirmed University are starting their Entrepreneur Boot Camp in June and could form part of WInn's June launch	<ul style="list-style-type: none"> ➤ WInn team and Tim to get together and discuss details and ways to integrate and build into Launch and main plan 	JA/RD/DO TM
7	Location	It was confirmed and agreed that WInn requires an office to work out of initially but with a view that its scope will expand as the project evolves	<ul style="list-style-type: none"> ➤ Board were supportive and offered ideas for space. The Hive was discussed as an option. Nigel took action away to find out possibilities and Tim will also look into from the University. 	NH

